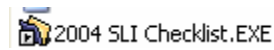


## How to access the checklist database:

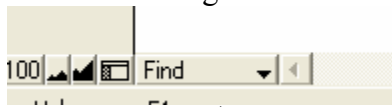
- A) Put the CD in your computer. You can run the checklist database from the CD.
- B) Open the 2004 SLI Checklist folder on the CD using Explorer. Double click on the file 2004 SLI Checklist.EXE. This will start the checklist software. The folder looks like:



- C) If you like, make a shortcut on your Windows desktop or some other folder to 2004 SLI Checklist.EXE on your D: drive. If your CD/DVD player is another letter, use that. You have to have the CD in your computer for this to work.

## How to use the database:

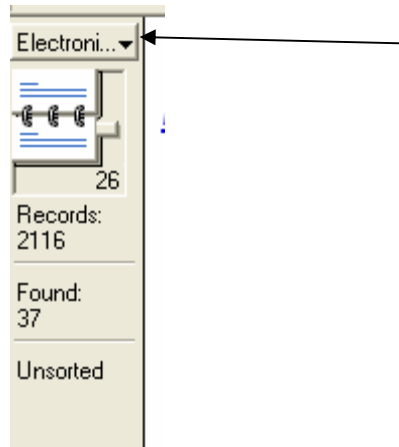
- A) There are three modes for accessing the database:
  - a. **Browse** mode which is like turning the pages of a book. This is the mode that will probably be used most often.
  - b. **Find** mode which allows you to search values in a field
  - c. **Preview** mode which lets you see what your results would look like printed on a page.
- B) You can switch from each mode by using the **View Menu** or the mode button in the lower right hand corner.



The Mode button in the lower left corner.

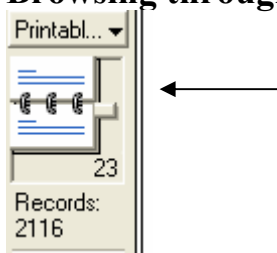
## The easiest way to view the data:

- A) **The Layout Button** – Use this to select how you want to see the data.



- a. **Electronic Format** – Displays the information and photo for just one cultivar in an easy to read format.
- b. **Sorted Format** – Lists the information for more than one cultivars. Each cultivar gets a line in the report. This can be sorted or unsorted. If the sort order looks funny, check to see if it really is sorted.
- c. **Printable Copy1** – The information is presented for printing on a page in the traditional checklist format.
- d. The layout can further be viewed as a form, list or table by using the **View Menu** and selecting *View as Form*, *View as List* or *View as Table*. This is not real useful since the layouts are pretty good and it can cause problems. For best results, the **Electronic Format** should be *View as Form*, the **Sorted Format** should be *View as List* or *View as Table* and the **Printable Copy1** should be *View as List*. If a layout looks strange, check to see if it is being viewed correctly.

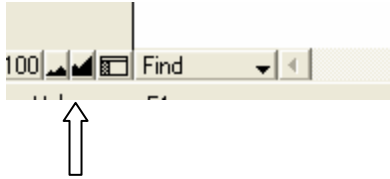
### Browsing through the Data:



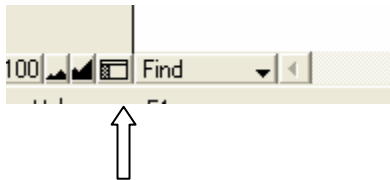
- a) **The Book Icon Tool** lets you page forwards or backwards through the cultivars by clicking on the top or bottom page. The bottom page is forwards and the top page is backwards.
- b) **The Book Icon Slider Bar** lets you flip through pages of cultivars by sliding it up or down. This is the bar above the number 23 in the picture.

- c) **Numbers of records:** The 2116 under the word Record: indicates that there are 2116 cultivars listed in the database (each cultivar is a record). The 23 above that indicates that 23 cultivars were returned in by our search.

### Changing the appearance of the electronic checklist:



You can zoom in or zoom out pressing the second and third buttons in the lower left. The first button shows you the amount of reduction or magnification. A value of 100 means the view is the actual size. Less than 100 is a reduced view and over 100 is a magnified view. Clicking on the second button reduces the size, clicking on the third button magnifies the view.

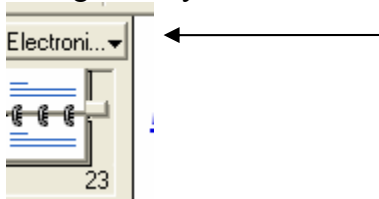


This button removes or restores the left-most frame. You can use this to remove the frame to get a clean view similar to what you would see in a printed checklist.

### Searching:

It is simple to use the search features of the cultivar database. Enter search mode by clicking on the mode button in the lower left corner or use the *View* menu and pick *Search* or press the Control key and the f key at the same time.

Change the layout to the Electronic Format since this is the easiest to use for searches.



Enter the word or words that you would like to search for in any of the cultivar information fields:

The search below is for cultivars with the word **red** in their name hybridized by Vaughn. This is an example of an *and* search since you are looking for an iris with **red** in its name that was also hybridized by Vaughn.

## Society for Louisiana Irises

### [Electronic Check List](#)

SLI Ref. No.

Cultivar

Hybridizer

Seedling No.  Registration

Height  Bloom Season

Hoody Level

This returns one cultivar:

## Society for Louisiana Irises

### [Electronic Check List](#)

SLI Ref. No.

Cultivar

Hybridizer

Seedling No.  Registration

Height  Bloom Season

Hoody Level



Biographer: [K. Weis](#)

\* Indicates non-American hybridizer

If we had just searched for cultivars with the word **red** in their name, we would have found 21 different cultivars. The 21 cultivars can be browsed individually using the **Electronic Format** or listed by selecting the **Sort Results** layout as below:

## Society for Louisiana Irises

[Check List Search Results](#)

Cultivar	Registration	Hybridizer	Seedling No	Height	
Arizona Big Red	1996	Shepard, D. L.	89506-85P	38 (97)	Cl
Red Velvet Elvis	1996	Vaughn, K.	C-12-5	34-38 (86-97)	Je
Red Abundance	1993	Strawn, K.	O-1985	35 (89)	De
Phoenix Red Velvet	1987	Dopke, B.	ACDP-83-4	36 (91)	Ar
Red Dawn	1985	Rowlan, H.	83LA-14	34 (86)	W

### The Or Search:

The Or search is used for searching for two or more values in the same field or if you search doesn't require a cultivar to meet all of the search criteria. An example would be "find all the iris hybridized by Vaughn or Morgan". To do this search, type in *Vaughn* in the hybridizers field.

## Society for Louisiana Irises

### Electronic Check List

SLI Ref. No.	<input type="text"/>		
Cultivar	<input type="text" value="red"/>		
Hybridizer	<input type="text" value="vaughn"/>		
Seedling	<input type="text"/>	Registration	<input type="text"/>
No			
Height	<input type="text"/>	Bloom Season	<input type="text"/>
Floral	<input type="text"/>		
Level	<input type="text"/>		

Go to the *Requests* menu and select *Add New Request* or press the Control key and the N key at the same time. Type in *Morgan* in the hybridizers field.

## Society for Louisiana Irises

### Electronic Check List

SLI Ref. No.	<input type="text"/>		
Cultivar	<input type="text"/>		
Hybridizer	<input type="text" value="Morgan"/>		
Seedling	<input type="text"/>	Registration	<input type="text"/>
No			
Height	<input type="text"/>	Bloom Season	<input type="text"/>
Floral	<input type="text"/>		
Level	<input type="text"/>		

\* Indicates non-American hybridizer

Biography

Click on the *Find* button or press the Enter key. This is the first few unsorted results look like in Sort Results layout.

# Society for Louisiana Irises

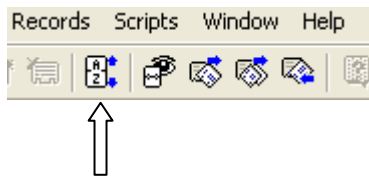
## Check List Search Results

Cultivar	Registration	Hybridizer	Seedling No	Height	Pod Parent
Cozy Moment	1999	Morgan, R.	L 607-V	25 (64)	L-152-V: (Bayou \
Bananas Foster	1998	Vaughn, K.	F-17-4	25-27 (63-69)	Heavenly Glow
Creative Edge	1998	Vaughn, K.	G-93-1	34 (86)	Old South Ball
Lemon Zest	1998	Vaughn, K.	F-32-1	24-28 (61-71)	Heavenly Glow
Razor Edge	1998	Vaughn, K.	F-17-1	25 (64)	Heavenly Glow
Roasted Pecan	1998	Vaughn, K.	F-17-8	25 (64)	Heavenly Glow
Ada Morgan	1997	Morgan, R.	L275-A	30 (75)	L29-A: (Clyde Re
Angelic Charm	1997	Morgan, R.	L116A	24-28 (61-71)	Winter's Veil
Arachnophobia	1997	Vaughn, K.	F-60-1	36-38 (91-97)	Black Widow
Cajun Pinstripe	1997	Vaughn, K.	E-49-1	38-41 (96-102)	Dural White Butte
Cajun Wedding	1997	Vaughn, K.	E-4-3	36-42 (91-107)	Alluvial Gold
Dream Wish	1997	Morgan, R.	L782-A	21 (53)	unknown (possib

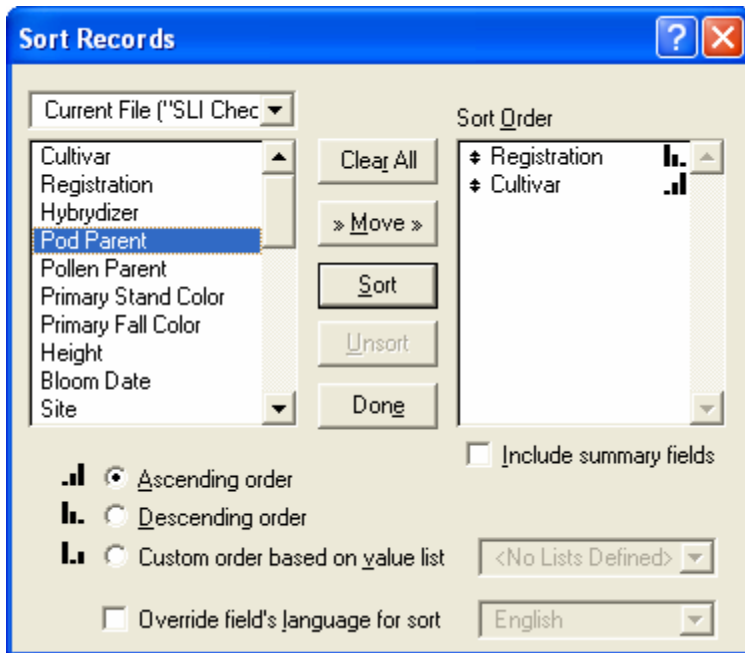
When you are done searching, you can clear out the results of your search using the **Record** menu and **Show All Records**. A faster way to clear the search results is to press the Control key and the J key at the same time.

### Sorting:

To specify a sort order for the cultivars, pick **Sort** on the **Record Menu** or press the Sort Button or use pressing the Control key and the S key at the same time. The sort button looks like this:



This will bring up the Sort Screen:



On the left, highlight the column you want to sort with and press move to put them into the right window. The ascending bars signify ascending order and the descending bars specify descending order. Select ascending or descending order for a field using the buttons on the lower left. When you have selected the sort order, press the **Sort** button to sort the list of cultivars.

## Problems:

- 1) **The form looks odd like this:**

# Society for Louisiana Irises

## Electronic Check List

Primary Stand Color		white	Primary Fall Color		white
Introduced By		Redbud Lane Garden		Date Introduced	1993
Awards		<small>Honorable Mention</small>	<small>Award of Merit</small>	<small>DeBullion Award</small>	<small>DeBullion Medal</small>
Awards		<small>Secondary Awards</small>			
SLI Ref. No.					
Cultivar		Dawn Aglow			
Hybridizer		Lee, W. D.			
Seedling No		W1980	Registration		1987
Height		19 (48)	Bloom Season		M
Hoody Level		Dip			
* Indicates non-American hybridizer					
Pod Parent		Lee seedling		Pollen Parent	
Pod Parent				Pollen Parent	
Description		Stands very light cream, overlaid light lavender; light lavender style arms, green in center of flower; falls very light cream, pale lavender edge, orange signal			



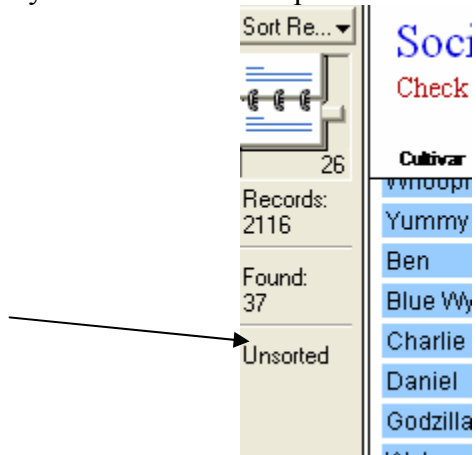
Photographer:

Solution: Go to the view menu and look about ½ way down. It is probably set as *View as list* change it to *View as Form*. This will clear up the problem.

- 2) **How do I clear out a search results?** Go to the **Record Menu** and select **Show all Records** . This will bring back all the iris in the database. You can also hit the control key and J at the same time to clear out the search results.
- 3) **The results are sorted funny:** the year 2000 registrations and beyond appear at the bottom of the list.

Bandito	1977	Durio, D.	LAC-1-75	30(76)	Carman
Blue Water	1977	Durio, K.	Big Blue BB1	36 (91)	unknown
Carmen	1972	Durio, K.	Re-100-70 XX	25 (64)	Re-18-68: (Wheel
Charlotte Ann	1972	Durio, K.	Y3-4-70	36 (91)	(Wheelhorse x W.
Matthew	2000	Durio, K.	FLA#5	36(91)	Cajun Dome
Lisa Durio	2001	Durio, K.	LA 1-98-D	30(76)	unknown
Tina Bourdeaux	2001	Durio, K.	JIM-1	30-36(76-91)	Clara Goula
Patton Durio	2004	Durio, K.	White tet 101	24-30(61-76)	Sauterne

Actually the results are not sorted. If you look at the left frame, it will say the results are not sorted. Hit the Sort button on the toolbar or select the **Sort** on the **Record** menu and specify the sort order then press the **Sort** button. This will fix the problem.



The sort button looks like this:

